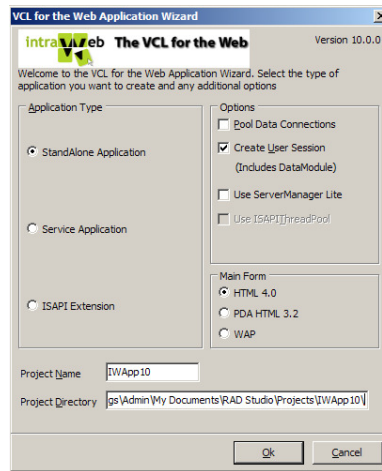
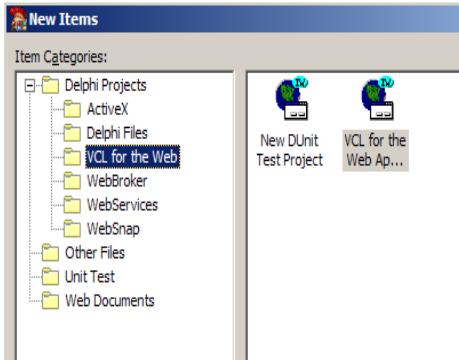


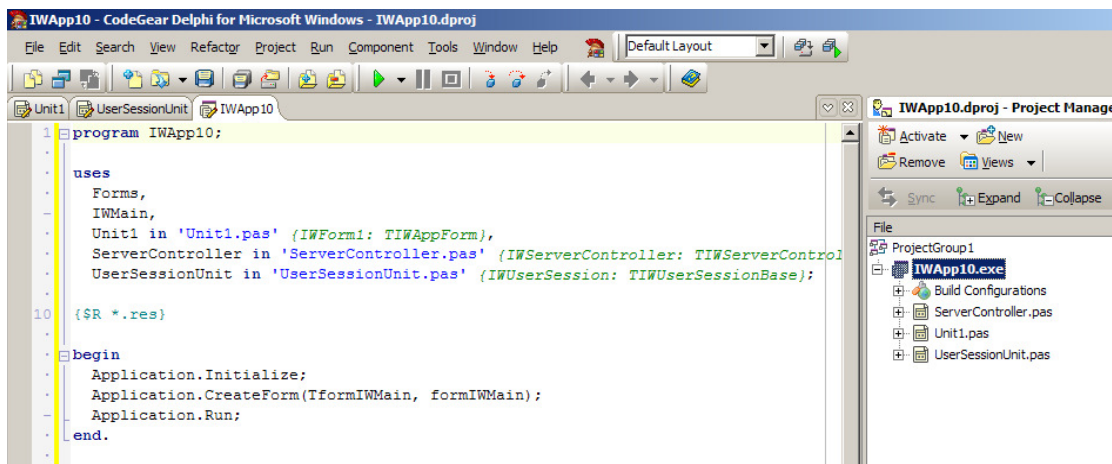
Delphi 2009 Pro, Win XP SP3, IntraWeb (IW)10.0 - Notes - IW (standalone) Application Server

VCL for Web (IntraWeb) design package as installed in D2009 out of the box. Worked example - Web app 'IWTriangle' utilizing IW standard components.

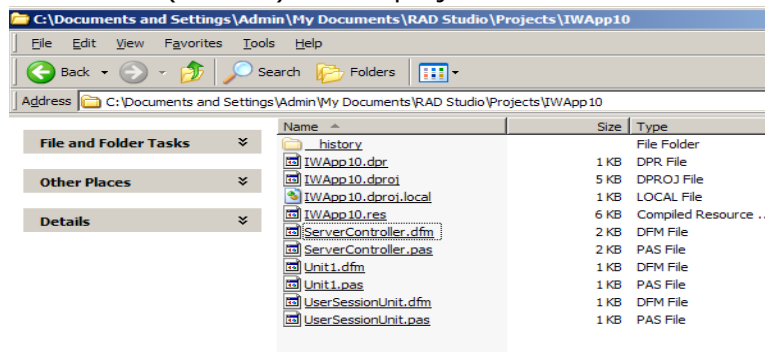
New IW App



D2009 - File > New > Other... New Items > VCL for Web Application Wizard. Project Name entry is chosen name of new project folder, in this case IWApp10. Dialog OK, then new project files opened in IDE:

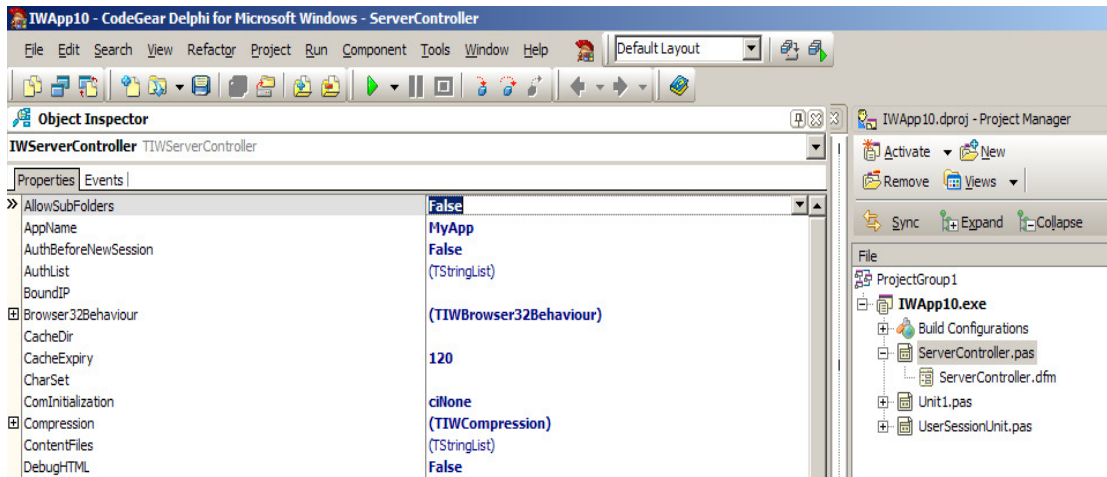


Project folder *C:\Documents and Settings\Admin\My Documents\RAD Studio\Projects\IWApp10* is empty until File > Save Project As... Then (at start) files in project folder are:



In Delphi, File > Open Project... IWApp10.dproj

Server Controller



In Project Manager, double-click on ServerController and get Object Inspector for setting of Properties. Settings made for present purposes:

- **AppName** - Changed from MyApp to IW Triangle App;
- **AuthList** - Empty list means no login. Login required, therefore initial entry made i.e., name-value pair admin=admin (user admin, password admin).
- **Description** - Changed from My IntraWeb Application to Triangle Solutions.
- **SessionTrackingMethod** - Set to tmHidden so as to use hidden values to maintain app data.

In Project Manager, not used in Triangle application, UserSessionUnit can be removed from project - right-click UserSessionUnit.pas > local menu > Remove From Project.

Triangle Application

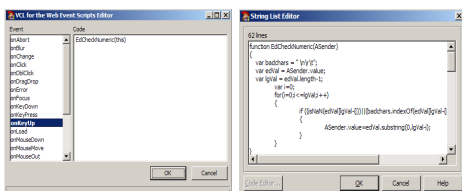
Form file *Unit1* is written same as for Delphi Windows desktop app but some differences are:

- IntraWeb components
- Dialogs
- Javascript

IW Standard IntraWeb components from Tool Palette. Check out *unit1* Design tab (click on component to get Object Inspector details, press Esc to get underlying region or form). All IW components, but TIWMenu.AttachedMenu is Delphi Windows type TMainMenu.

Dialogs (kind of crude) are 'manufactured'. Example is the File Exists dialog. *Unit1* Design tab, click on FExistsDialog: TIWRegion. Visible property is set False/True in code to effect pop-up dialog. TIWRegion acts as container for controls. Example FExistsDialog has TIWLabel and TIWButton controls placed on it - method is to select the region, click on control from Tool Palette then click on the selected region to place the control - test is to select the control, press Esc and see the region selected in Object Inspector, press Esc again and see the form. When dialog is moved (mouse select and drag) on the form, controls on the dialog move with it - dialog and controls are single entity. Note Top and Left properties of dialogs are assigned values in code, so can be any position on form designer.

Javascript In this Triangle app, Javascript functions are for control of numeric and (in this case) file name inputs. *Unit1* Design tab, click on edS1: TIWEdit. In Object Inspector, click on ScriptEvents and open Event Scripts Editor as shown. Javascript events for (edit) control are listed; in this case the onKeyUp event triggering Javascript function EdCheckNumeric. *Unit1* Design tab, click on the form (IWForm1), click on Javascript property and open local editor - see Javascript functions.



Ends.